

POLICY: 554.81  
TITLE: Burns

EFFECTIVE: 02/01/2026  
REVIEW: 02/2028  
SUPERCEDES:

APPROVAL SIGNATURES ON FILE IN EMS OFFICE

PAGE: 1 of 2

## BURNS

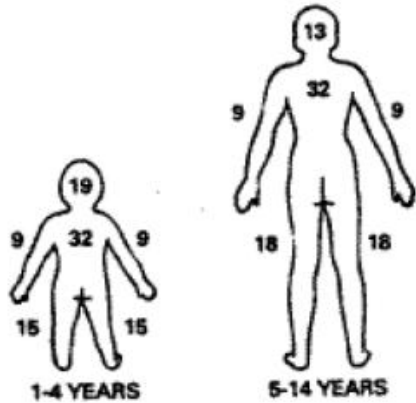
- I. AUTHORITY  
Health and Safety Code, Division 2.5, California Code of Regulations, Title 22, Division 9
- II. PURPOSE  
To serve as a patient treatment standard for EMRs, EMTs, and Paramedics within their scope of practice.
- III. PROTOCOL

**Provider Key: F = First Responder/EMR      E = EMT      O = EMT Local Optional SOP**  
**P = Paramedic                                      D = Base Hospital Physician Order Required**

## USE TRAUMA TRANSPORT CRITERIA

	F	E	O	P	D
<b>SCENE SAFETY:</b> move patient to a safe environment.	X	X	X	X	
<b>ASSESSMENT</b>	X	X	X	X	
<b>STOP BURNING PROCESS:</b>					
<ul style="list-style-type: none"> <li><b>CHEMICAL BURN</b> - brush off dry chemicals then apply cool running water for 20 minutes as available. Consult container label for decontamination instructions and transport label with patient.</li> <li><b>THERMAL BURNS</b> – if burn occurred less than 3 hours ago and is less than 30% TBSA, apply cool with water for 20 minutes, as available.</li> </ul>	X	X	X	X	
<b>AVOID HYPOTHERMIA:</b> cool only the burned area and keep unaffected body parts warm by covering and using heater in passenger compartment.	X	X	X	X	
<b>PULSE OXIMETRY:</b> apply and monitor.		X	X	X	
<b>CAPNOGRAPHY:</b> apply and monitor.				X	
<b>OXYGEN:</b> if pulse oximetry <94% or signs of respiratory distress or hypoperfusion. Consider high flow O <sub>2</sub> if CO exposure is suspected. If intubated, ventilate with bag-valve and 100% oxygen.	X	X	X	X	
<b>INTUBATE:</b> if facial or oral swelling and respiratory depression present.				X	
<b>ECG MONITOR:</b> lead placement may be delegated. Treat as indicated.				X	
<b>12-LEAD ECG:</b> for electrical burn.				X	
<b>VASCULAR ACCESS:</b> IV/IO.				X	
<b>FLUID RESUSCITATION:</b> for partial & full thickness burns surface area > 9%, consider 2 large bore IVs and 500 mL fluid bolus. Repeat bolus as needed to maintain systolic BP of 100. Consider warm IV fluids, unless hyperthermic.				X	

	F	E	O	P	D
<b>DRESS BURNS:</b>					
• Thermal Burns with >20% body surface area, cover with dry dressing and keep patient warm.	X	X	X	X	
• Thermal Burns with <20% body surface area, apply moist dressing.					
<b>PAIN MANAGEMENT:</b> Refer to 554.44 PAIN MANAGEMENT				X	



<u>Burn Area</u>	<u>Age in years</u>			
	<u>1</u>	<u>1-4</u>	<u>5-9</u>	<u>10-14</u>
Head	19	17	13	11
Neck	2	2	2	2
Anterior Trunk	13	13	13	13
Posterior Trunk	18	18	18	18
Genitalia	1	1	1	1
Upper Extremity (each)	9	9	9	9
Lower Extremity (each)	14.5	15.5	17.5	18.5

The patient's palm (hand minus fingers) is about 1% of the patient's body surface area.